



£895,000

Witham Road

Isleworth, TW7 4AJ

PROPERTY SUMMARY

Situated on a highly sought-after residential road in Isleworth, this well-presented four-bedroom semi-detached family home is offered to the market with no forward chain.

The home itself offers a wealth of period character throughout and has been thoughtfully extended on the ground floor. Accommodation comprises a welcoming entrance hallway leading to a spacious through reception room with a charming bay window, a versatile home office/utility room, and a modern fitted kitchen/dining area featuring bi-folding doors opening onto the rear garden. A convenient downstairs WC completes the ground floor.

To the first floor, there is a generous principal bedroom with bay window and en-suite WC, two further well-proportioned double bedrooms, a good-sized single bedroom, and a four-piece family bathroom.

Witham Road is a quiet, tree-lined street popular with families, known for its attractive period homes and strong sense of community, while still being conveniently positioned for excellent transport links and local amenities.

The property is ideally located within easy reach of Isleworth mainline station, providing direct access into London Waterloo, as well as Osterley Underground station (Piccadilly Line). The area is also well regarded for its selection of highly rated local schools, nearby parks including Osterley Park and Syon Park, and a variety of shops, cafes, and everyday conveniences along London Road.

Resident permit parking is available.

4



2



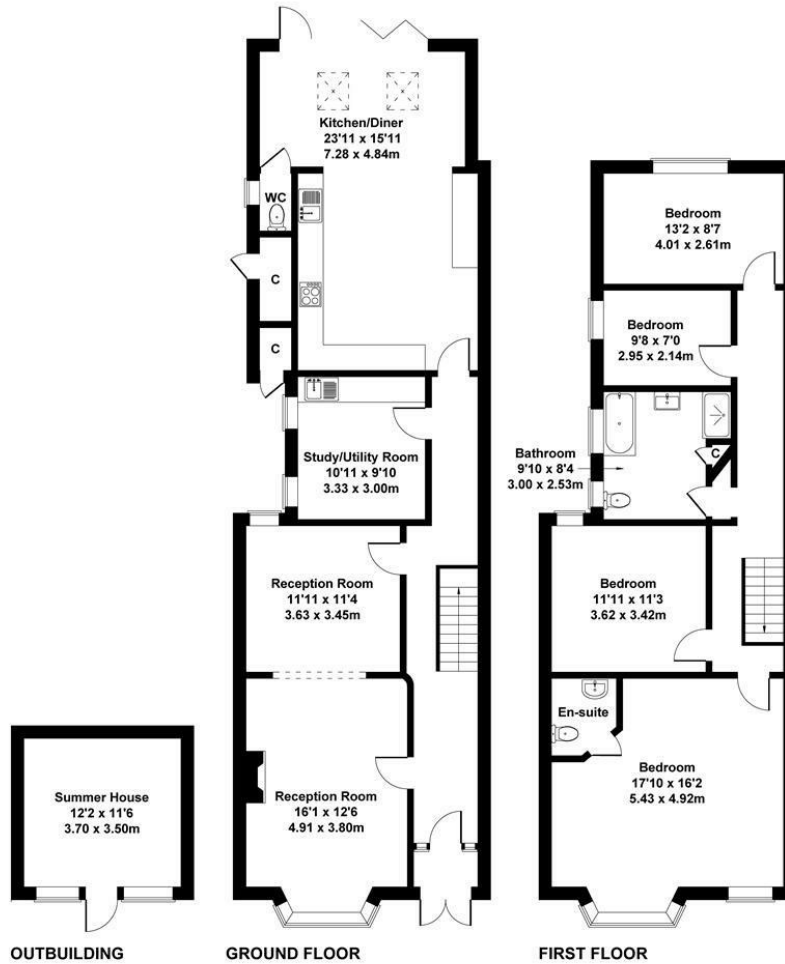
3





Witham Road, Isleworth

Approximate Gross Internal Area
2120 sq ft - 197 sq m



Not to Scale. Produced by The Plan Portal 2026
For Illustrative Purposes Only.



LOCAL AUTHORITY

Hounslow

TENURE

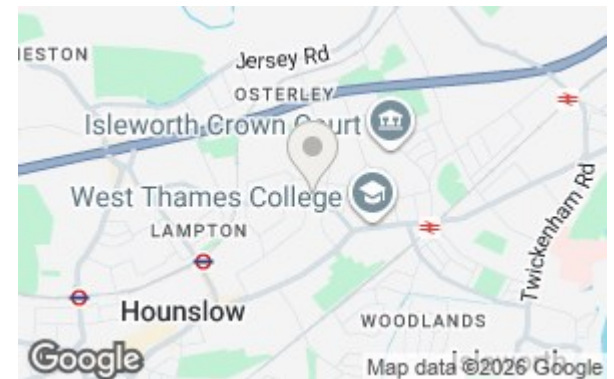
Freehold

COUNCIL TAX BAND

VIEWINGS

By prior appointment only

Energy Efficiency Rating		Current	Potential
Very energy efficient - lower running costs			
(92 plus) A			
(81-91) B			83
(69-80) C			
(55-68) D		64	
(39-54) E			
(21-38) F			
(1-20) G			
Not energy efficient - higher running costs			
England & Wales		EU Directive 2002/91/EC	



Agents Note: Whilst every care has been taken to prepare these particulars, they are for guidance purposes only. All measurements are approximate and are for general guidance purposes only and whilst every care has been taken to ensure their accuracy, they should not be relied upon and potential buyers/tenants are advised to recheck the measurements

**Shaw
& Co**
ESTATE
AGENTS

OFFICE ADDRESS
10 Central Parade
New Heston Road
Heston
Middlesex
TW5 0LJ

OFFICE DETAILS
0208 570 7258
heston@shawandcoestates.com